

## BARWON GLOBAL LISTED PRIVATE EQUITY FUND AF

# FUND PROFILE

December 2025

### FUND OVERVIEW

<b>Fund type</b>	Open-ended
<b>APIR code</b>	PIM7967AU
<b>Inception date</b>	4 June 2020 (inception date of the underlying fund, BGLPEF, is 1 June 2007)
<b>Investors</b>	Wholesale clients as defined under Section 761G of the Corporations Act
<b>Fund benchmark</b>	The strategy is managed on a "benchmark unaware" basis and there is no tracking error constraint
<b>Recommended investment timeframe</b>	Minimum 5 years
<b>Borrowing</b>	The Fund will not borrow
<b>Currency</b>	Substantially hedged to Australian dollars
<b>Average number of stocks</b>	Typically 20-25 stocks in the BGLPEF; on a look-through basis, underlying company exposures will be 100+
<b>Minimum investment &amp; withdrawal amounts *</b>	\$25,000 – initial investment \$10,000 – additional investment \$10,000 – minimum withdrawal
<b>Unit Pricing</b>	Daily
<b>Applications &amp; withdrawals</b>	Daily
<b>Distribution frequency</b>	Annually
<b>Establishment fee</b>	None
<b>Withdrawal fee</b>	None
<b>Management fee</b>	0.87% p.a. of the NAV (inclusive of GST net of RITC) plus indirect costs**
<b>Performance fee</b>	15.375% of the return in excess of 12% p.a. on a rolling two and a half year basis (inclusive of GST net of RITC)
<b>Buy/sell spread</b>	0.30% / 0.30%
<b>Investment manager</b>	Barwon Investment Partners
<b>Responsible entity</b>	The Trust Company (RE Services)
<b>Custodian</b>	Apex Fund Services

\* these amounts may be varied if investment is made via a platform

\*\* please refer to the PDS for further details on indirect costs

### INVESTMENT OVERVIEW

The Barwon Global Listed Private Equity Fund AF is a feeder fund investing in units of the Barwon Global Listed Private Equity Fund (underlying fund). The feeder fund has been designed exclusively to allow investors using platforms and investor directed portfolio services products access to Barwon's bottom-up, research driven investment approach as well as exposure to listed private equity as an asset class.

The Barwon Global Listed Private Equity Fund (underlying fund) was established in 2007 and aims to provide investors with a high performing portfolio of private equity investments in a fee efficient manner while offering daily liquidity.

The underlying fund invests in publicly-traded investment companies that invest in the equity and debt of private companies, including buyouts, growth capital, and venture capital. The underlying fund also invests in private equity-backed listed companies.

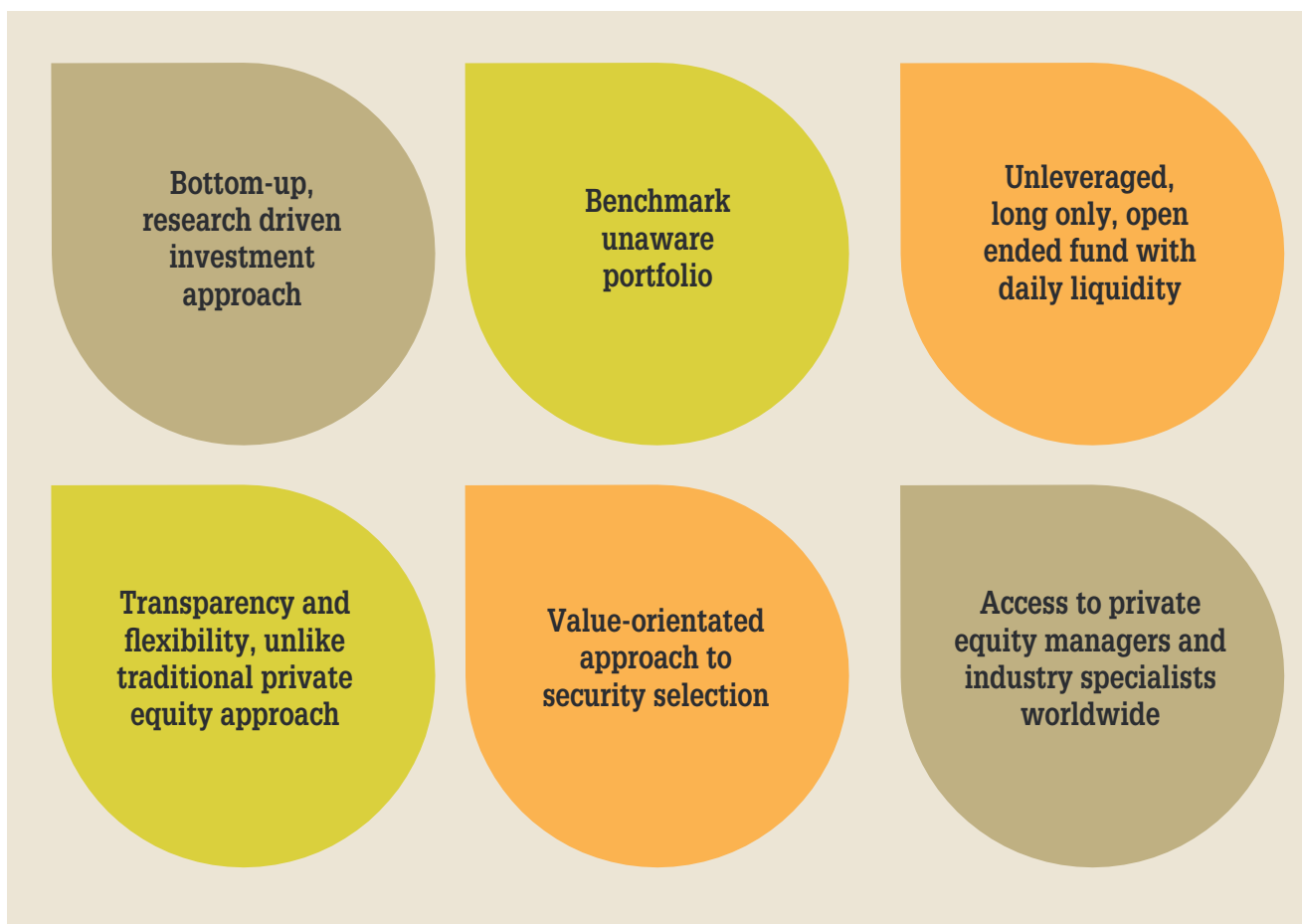
Undertaking bottom-up, hands on research, Barwon's team seeks to identify the best opportunities from an investment universe of more than 900 listed securities. The output of this research is a benchmark unaware portfolio consisting typically of 20-25 securities, which aims to provide diversification across geographies, deal stages and vintages.

The Barwon Global Listed Private Equity Fund AF has exposure to four types of private equity investments:

Investment type	Drivers
Buyouts	<ul style="list-style-type: none"> <li>Earnings growth of underlying portfolio companies</li> <li>Deployment of capital and deal underwriting</li> <li>Evolution of PE buyout strategies</li> </ul>
PE backed listed companies	<ul style="list-style-type: none"> <li>PE strategy implementation</li> <li>Earnings growth</li> <li>Alignment with PE sponsor</li> </ul>
Alternative asset managers	<ul style="list-style-type: none"> <li>Deployment of capital</li> <li>Future investment returns</li> <li>Diversification of strategies</li> <li>Capital formation</li> </ul>
Private debt	<ul style="list-style-type: none"> <li>Focus on senior secured loan exposure</li> <li>Illiquidity premium</li> <li>Increased regulatory leverage improving flexibility</li> <li>Discount to book value</li> </ul>

## KEY FEATURES

---



## WHY INVEST IN THE BARWON GLOBAL LISTED PRIVATE EQUITY FUND AF?

---

**The Fund offers daily liquidity** – listed private equity (LPE) securities can be freely bought and sold, subject to stock trading volumes. In contrast, unlisted private equity funds often require capital to be committed for up to 10 years and interests are difficult and costly to buy and sell through one-off transactions.

**Immediate investment and diversification** – the Fund provides the opportunity for investors to immediately gain exposure to a liquid, well diversified portfolio of quality LPEs and PE backed securities by geography, deal stage, vintage year and manager. The creation of a quality private equity portfolio through a program of unlisted funds is difficult to achieve for all but the largest of institutional investors and comes at significantly greater cost and effort.

**No J curve** – investments in unlisted private equity funds typically experience negative or low returns in the first few years of the fund's life, an effect known as the J Curve. Fees and losses from failures tend to outweigh returns in the early years, with significant returns being back-ended. LPE avoids this effect because the underlying investments tend to be a mix of funds and companies at varying stages and of a range of vintages.

**PE returns** – private equity has typically outperformed traditional listed equities. Private equity funds use the skills of the manager, leverage and more attractive private market pricing to generate these returns.

**Pricing, market inefficiencies and the Barwon competitive edge** – Barwon believes that LPE securities are poorly understood because of sporadic news flow and limited research. This often provides the opportunity to purchase assets cheaply, often at significant discounts to net asset value. Barwon has an experienced private equity team that understands the value inherent in LPE companies and has excellent access to managers and industry specialists worldwide.

## ABOUT BARWON INVESTMENT PARTNERS

---

Barwon Investment Partners (Barwon) is an independent, alternative fund manager focused on creating innovative investment solutions in the private equity and property asset classes. It has a strong governance focus and an over 15-year track record managing institutional capital. Barwon's unique product set, coupled with its investment ethos and approach, are just some of the reasons we chose to work with Barwon.

---

Barwon has five partners, each with extensive experience in investment management and financial services. It also employs a highly experienced investment team of twenty plus individuals, each of whom has deep expertise in alternative investment markets.

The investment philosophy employed by Barwon centres on a belief that alternative investment markets are less efficient than traditional asset classes. Reduced competition and greater inefficiencies in these sectors offer investors the opportunity for superior risk-adjusted returns. Barwon believes that:

- Private equity outperforms public markets over the medium term
- Listed private equity NAVs perform similarly to traditional private equity
- Investor returns are ultimately driven by NAV growth
- Inefficiencies in the LPE market arise from information asymmetry, lack of broker research coverage and a lack of attention from institutional investors.

In managing listed private equity, Barwon focuses on sources of inefficiency such as lack of transparency in public disclosures, limited sell-side coverage and the complexity of capital and deal structures.

This gives Barwon a considerable edge, which includes:

- An informational advantage – meeting in person with managers, scouring public data and leveraging its extensive network
- A focus on understanding intrinsic value and projecting NAV growth
- The ability to take a granular approach to valuation.

## KEY INVESTMENT PROFESSIONALS

---

Barwon has a well-resourced, knowledgeable private equity team of eight investment professionals, each with extensive experience in listed private equity.

*“Listed private equity provides investors with PE returns but with public market liquidity. It is an inefficient market so alpha can be generated through active management”*



**Sam Armstrong**  
**Head of Private Equity, Founding Partner**

Sam is a founding partner of Barwon and oversees Barwon's Private Equity business including the Barwon Global Listed Private Equity Strategy, Barwon's Private Capital Access Solutions Strategy, and direct private equity co-investment and secondaries strategies. He is a member of

Barwon's Investment Advisory Committee. Sam has been involved in alternative investments since 1990. Prior to founding Barwon, Sam was a founding partner at Quay Partners and before that he was Head of Alternatives at Macquarie where he worked for over 10 years. Sam graduated with a Bachelor of Commerce (Hons), University of Melbourne and with an MBA from Columbia University, New York.



**Bob Liu**  
**Portfolio Manager, CFA**

Bob is a Portfolio Manager within Barwon's Private Equity team, and leads the firm's listed private equity strategy. Bob is responsible for setting the investment strategy, investment analysis, market research, and managing stock selection and portfolio construction for the listed

private equity funds. Bob joined Barwon as an investment analyst in 2009 from IBM. Bob holds a Bachelor of Laws and Bachelor of Commerce from UNSW and is a Chartered Financial Analyst.



**Lisa Swanton**  
**Portfolio Manager**

Lisa is a Portfolio Manager within the Private Equity team, responsible for investment analysis, market research, stock selection and portfolio construction for the firm's global listed private equity strategy. Lisa joined Barwon in 2013, having previously worked as a Senior Investment

Analyst at a London-based funds management firm specialising in student accommodation and residential real estate. Lisa holds a Bachelor of Science (Economics and Finance) from University College Dublin and a Master of Science in Risk Management and Financial Engineering from Imperial College Business School, London.



**James Brown**  
**Portfolio Manager**

James is a Portfolio Manager within the Private Equity team and is a member of Barwon's Investment Advisory Committee, overseeing Barwon's global listed private equity strategy. James also leads Barwon's Private Capital Access Solutions strategy, providing Australian wholesale investors with access to top-tier

offshore private market strategies. James also has substantial client service and business development responsibilities, leading Barwon's institutional fundraising efforts. Prior to joining Barwon in 2018, James was a portfolio manager at Walsh & Co Asset Management and a sell-side research analyst at Winterflood Securities. James holds a Bachelor of Business from the University of Technology, Sydney, and trained as a Chartered Accountant.



**Sargunn Sahota**  
**Investment Analyst**

Sargunn is an Investment Analyst in the Private Equity team at Barwon and is responsible for investment analysis and market research of stocks under his coverage. Prior to joining Barwon, he worked as a consultant at Factset where he was responsible for

managing accounts for different buy-side investors. He graduated from a Bachelor of Applied Finance and Bachelor of Economics with a HD GPA and was the recipient of the university medal from 2017-2020. Sargunn is a level 2 CFA candidate.



**James Mirabito**  
**Investment Analyst**

James is an Investment Analyst in Barwon's Private Equity team. James is responsible for investment analysis and market research. Prior to joining Barwon in 2025, James worked as an investment analyst at Antipodes primarily covering global infrastructure, and

assisting with commodities, industrials, and ESG coverage. James holds a Bachelor of Commerce from UNSW and is currently a CFA level 3 candidate.

## HOW TO INVEST

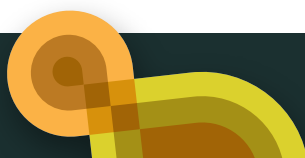
Investment can be made using the Fund's PDS (for wholesale investors) or via the following Investor Directed Portfolio Services:

AMP North
Asgard
BT Panorama
CFS Edge
eXpand
HUB24
Macquarie Wrap
Netwealth
Powerwrap
Praemium
uXchange

## WHAT IS THE RESEARCH OPINION OF THE FUND?

The Barwon Global Listed Private Equity Fund AF has been assessed by key research houses and has received the following ratings as at 31 December 2025.

### Qualitative Ratings



## CONTACTS

---

For more information about the Barwon Global Listed Private Equity Fund AF, please contact:

### **Mark Aufderheide**

Key Account Manager (NSW/SA)

E: mark.aufderheide@pantribal.com.au

M: 0408 847 211

### **Nick Baring**

Key Account Manager (VIC/TAS)

E: nick.baring@pantribal.com.au

M: 0457 520 297

### **Stuart James**

Key Account Manager (NSW)

E: stuart.james@pantribal.com.au

M: 0419 164 402

### **Matthew Mantle**

Key Account Manager (QLD)

E: matthew.mantle@pantribal.com.au

M: 0408 451 549

### **Jordan Thurlow**

Key Account Manager (NSW/WA)

E: jordan.thurlow@pantribal.com.au

M: 0404 759 366

### **Colin Woods**

CEO

E: colinwoods@pantribal.com.au

M: 0410 499 357

### **PAN-Tribal Asset Management Pty Ltd**

T: 03 9654 3015

F: 03 9662 3304

Level 17, 90 Collins Street, Melbourne VIC 3000

[www.pantribal.com.au](http://www.pantribal.com.au)

## DISCLAIMER

This document has been prepared and issued by PAN-Tribal Asset Management Pty Limited ABN 35 600 756 41 AFSL 462065 (PAN-Tribal) based on the information prepared by Barwon Investment Partners Pty Limited ABN 19 116 012 009 AFSL 298445 (Barwon) as the investment manager of Barwon Global Listed Private Equity Fund AF (Fund) and issued by The Trust Company (RE Services) Limited ABN 45 003 278 831 AFSL 235150 (Perpetual) as the responsible entity and issuer of units in the Fund. The content of this document is for general information purposes and does not take into account any particular investor's objectives, financial situation or needs. An investor should, before making any investment decisions, consider the appropriateness of the information in this document and the Fund's product disclosure statement (PDS) as well as seek professional financial advice, having regard to the investor's objectives, financial situation and needs.

The PDS and Target Market Determination (TMD) can be obtained free of charge by visiting [www.pantribal.com.au/funds/barwon-global-listed-private-equity/](http://www.pantribal.com.au/funds/barwon-global-listed-private-equity/). The information herein is current only as at the date of this document and may be superseded by subsequent market events or for other reasons. To the extent permitted by law, no liability is accepted for any loss or damage as a result of any reliance on this information. All investments contain risk and may lose value. Past performance is not a reliable indicator of future performance. Any opinions, forecasts, estimates or projections reflect judgments of the investment manager as at the date of this document and are subject to change without notice. Neither Barwon, nor Perpetual, nor PAN-Tribal guarantee the performance of the Fund or the return of an investor's capital. While reasonable care has been taken in the preparation of this document, neither Barwon, nor Perpetual, nor PAN-Tribal give any representation or warranty as to the reliability or accuracy of the information contained herein.

Applications to invest in the Barwon Global Listed Private Equity Fund AF must be made on the application form which can be obtained by contacting PANtribal on (03) 9654 3015. This document is issued on 08/04/2026. © 2026 PAN-Tribal Asset Management Pty Ltd.

The report that included the rating was published by Lonsec Research Pty Ltd ABN 11 151 658 561 AFSL 421 445 (Lonsec) on 08/10/2025. Lonsec receives a fee from fund managers for the preparation of reports. The report / rating is general advice only. An investor should be aware that: a) the advice has been prepared without taking into account an investors' objectives, financial situation or needs; b) an investor should consider the appropriateness of the advice having regard to their own objectives, financial situation or needs before acting on the advice; and c) an investor should obtain a PDS relating to the product, consider the PDS and seek independent financial advice before making any decision about whether to acquire the product. The rating is not a recommendation to purchase, sell or hold any product. Past performance is not a reliable indicator of future performance. Ratings are prepared based on information available at the time of preparation and may be subject to change by Lonsec without notice. Visit [lonsec.com.au](http://lonsec.com.au) for important documents (FSG, Conflicts Statement). © 2026 Lonsec. All rights reserved.

The Zenith Investment Partners (ABN 27 103 132 672, AFS Licence 226872) ("Zenith") rating (APIR: PIM7967AU assigned 25 February 2026) referred to in this piece is limited to "General Advice" (s766B Corporations Act 2001) for Wholesale clients only. This advice has been prepared without taking into account the objectives, financial situation or needs of any individual, including target markets of financial products, where applicable, and is subject to change at any time without prior notice. It is not a specific recommendation to purchase, sell or hold the relevant product(s). Investors should seek independent financial advice before making an investment decision and should consider the appropriateness of this advice in light of their own objectives, financial situation and needs. Investors should obtain a copy of, and consider the PDS or offer document before making any decision and refer to the full Zenith Product Assessment available on the Zenith website. Past performance is not an indication of future performance. Zenith usually charges the product issuer, fund manager or related party to conduct Product Assessments. Full details regarding Zenith's methodology, ratings definitions and regulatory compliance are available on our Product Assessments and at <https://www.zenithpartners.com.au/our-solutions/investment-research/regulatory-guidelines/>.